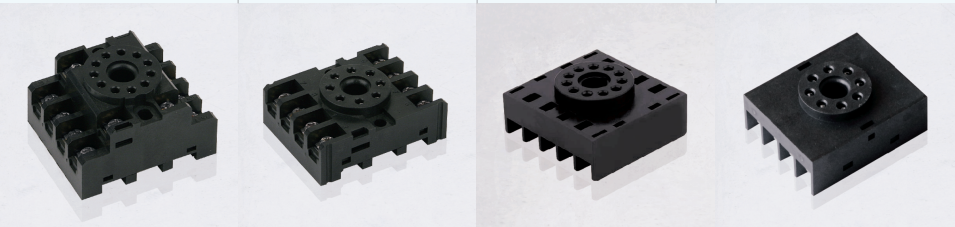
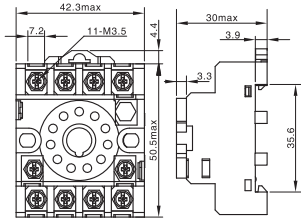


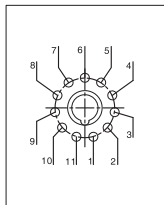
性能参数 / Parameter

类型/Name	10F继电器插座 / 10F Relay socket			
型号/Type	10F-3Z-C1	10F-2Z-C1	10F-3Z-A	10F-2Z-A
外观/Appearance				
Rated current / Rated voltage	10A/300V			
Dielectric strength adjacent contact circuits	2500			
Conductor cross section solid and stranded	1.5mm ²			
Conductor cross section(A.W.G)	16			
Stripping length				
Screw Thread	M3			
Ambient temperature (operation)	-25℃~+85℃			

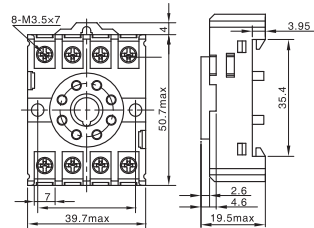
10F-3Z-C1



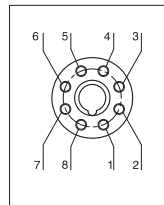
接线图/Wiring Diagram



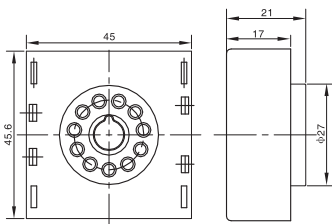
10F-2Z-C1



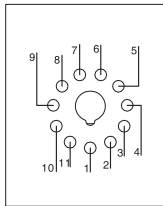
接线图/Wiring Diagram



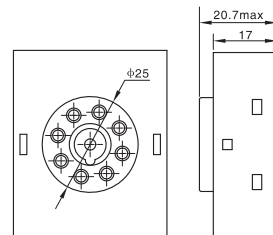
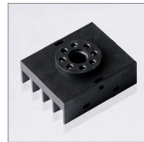
10F-3Z-A



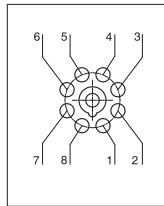
接线图/Wiring Diagram



10F-2Z-A



接线图/Wiring Diagram



ZJ18F/N

JH41F

ZJ18F/ZJ18FT

ZJ14F/ZJ14FW

ZJ10F

ZJ13F

其它继电器插座

ZJ3F

ZJT90

ZJT93

附件

ZJ10F

继电器

10F

继电器插座