



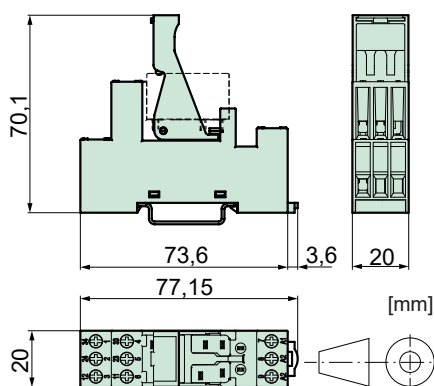
### DIN rail socket SRD-SIS3

#### Socket data

- With plastic retaining bracket
- Plug-in socket with screw terminals
- Mounting on DIN rail 35 mm



#### Dimensions



#### Technical data

Rated current	6 A
Rated voltage	250 VAC
Test voltage coil/contacts	2500 Vrms
Insulation class IEC 60664-1	250 VAC
Creepage resistance	CTI 250
Weight	approx. 45 g
Ambient temperature	-25°C to +70°C
Connection cross-sections	
for wires	2 x 2,5 mm <sup>2</sup>
for wire end ferrules	2 x 1,5 mm <sup>2</sup>
Maximum torque	0,8 Nm
Packing unit	10 pcs
Approvals	UL, cUL



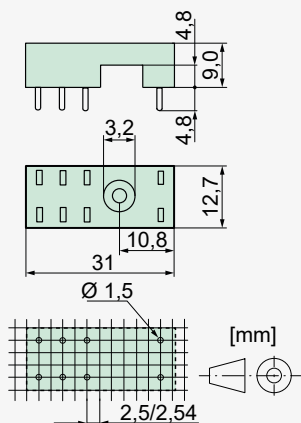
### Print socket SRP-SGR2

#### Socket data

- With plastic retaining bracket
- Socket with print connections



#### Dimensions



#### Technical data

Rated current	2 x 8A
Rated voltage	300 VAC
Test voltage coil/contacts	4 000 Vrms
Insulation class IEC 60664-1	250 VAC
Creepage resistance	CTI 250
Weight	approx. 4 g
Ambient temperature	-40°C to +70°C
Packing unit	100 pcs
Approvals	UL, cUL
UL File	E113714

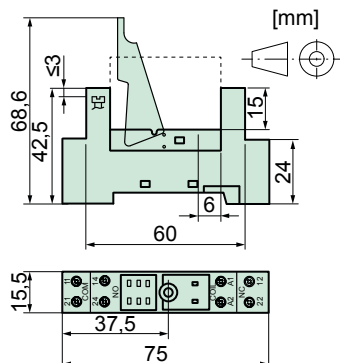
### DIN rail socket SRD-SGR2

#### Socket data

- With plastic retaining bracket and marking tag (1 pc)
- Screw terminals
- Assembly on DIN rail 35 mm or single-hole mounting with M3 screw



#### Dimensions



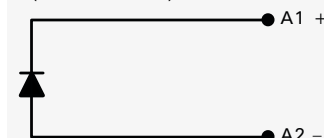
#### Technical data

Rated current	2 x 8A
Rated voltage	300 VAC
Test voltage coil/contacts	4 000 Vrms
Insulation class IEC 60664-1	250 VAC
Creepage resistance	CTI 250
Weight	approx. 40 g
Ambient temperature	-25°C to +70°C
Connection cross-sections	
for wires	2 x 2,5 mm <sup>2</sup>
for wire end ferrules	2 x 1,5 mm <sup>2</sup>
Maximum torque	0,8 Nm
Packing unit	20 pcs
Approvals	UL, cUL
UL File	E113714

### Modules für SRD-SGR2

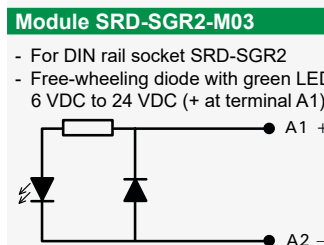
#### Module SRD-SGR2-M01

- For DIN rail socket SRD-SGR2
- Free-wheeling diode 6 VDC to 230 VDC (+ at terminal A1)



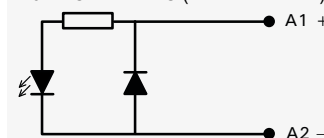
#### Module SRD-SGR2-M02

- For DIN rail socket SRD-SGR2
- Free-wheeling diode with red LED, 6 VDC to 24 VDC (+ at terminal A1)



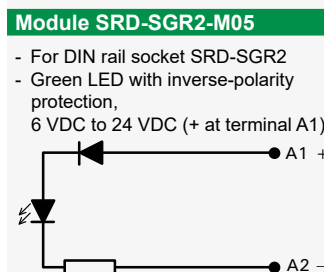
#### Module SRD-SGR2-M03

- For DIN rail socket SRD-SGR2
- Free-wheeling diode with green LED, 6 VDC to 24 VDC (+ at terminal A1)



#### Module SRD-SGR2-M04

- For DIN rail socket SRD-SGR2
- Red LED with inverse-polarity protection, 6 VDC to 24 VDC (+ at terminal A1)



#### Module SRD-SGR2-M05

- For DIN rail socket SRD-SGR2
- Green LED with inverse-polarity protection, 6 VDC to 24 VDC (+ at terminal A1)





### DIN rail socket

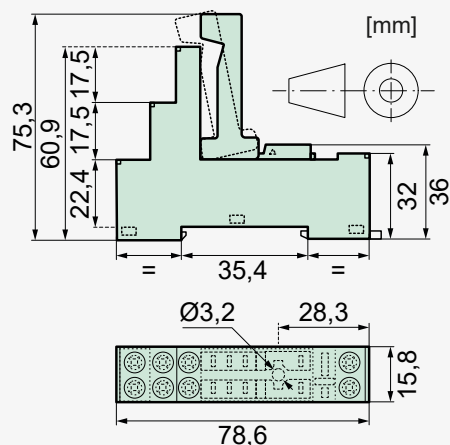
#### SRD-SGR2A KV2 (ZM825)

##### Socket data

- With plastic retaining bracket and marking tag (1 pc)
- Plug-in socket with screw terminals
- Assembly on DIN rail 35 mm or single-hole mounting with M3 screw



##### Dimensions



##### Technical data

Rated current	2 x 8A
Rated voltage	250 VAC
Test voltage coil/contacts	5000 Vrms
Please also observe the test voltage of the relay!	
Insulation class IEC 60664-1	250 VAC
Creepage resistance	CTI 250
Weight	approx. 46 g
Ambient temperature	-40°C to +70°C
Cross sections for connection with wires	
	1 x 6 mm <sup>2</sup> or 2 x 2,5 mm <sup>2</sup>
end sleeves for strands	
	1 x 6 mm <sup>2</sup> or 2 x 2,5 mm <sup>2</sup>
Maximum torque	0,5 Nm
Packing unit	20 pcs
Approvals	UL, cUL

### DIN rail socket

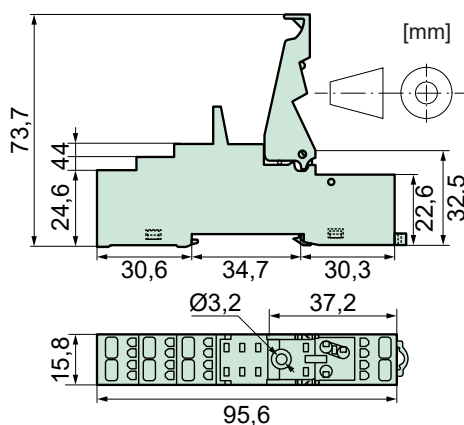
#### SRD-SGR2A KV2 PIK (ZMP825)

##### Socket data

- With plastic retaining bracket and marking tag (1 pc)
- Socket with push in contacts (PIK)
- Assembly on DIN rail 35 mm or single-hole mounting with M3 screw



##### Dimensions



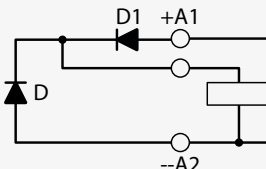
##### Technical data

Rated current	2 x 8A
Rated voltage	250 VAC
Test voltage coil/contacts	5000 Vrms
Please also observe the test voltage of the relay!	
Insulation class IEC 60664-1	250 VAC
Creepage resistance	CTI 250
Weight	approx. 40 g
Ambient temperature	-40°C to +70°C
Cross sections for connection with wires	
	2x (0,2 ... 1,5) mm <sup>2</sup>
with end sleeves for strands	
	2x (0,2 ... 1,5) mm <sup>2</sup>
Maximum torque	0,5 Nm
Packing unit	20 pcs
Approvals	UL, cUL

### Modules

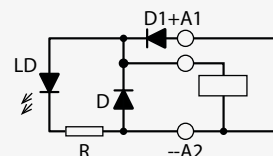
#### Module SRD-SGR2A M01

- For DIN rail socket SRD-SGR2A KV2 and SRD-SGR2A KV2 PIK
- With free-wheeling diode



#### Module SRD-SGR2A M03

- For DIN rail socket SRD-SGR2A KV2 and SRD-SGR2A KV2 PIK
- Free-wheeling diode with green LED





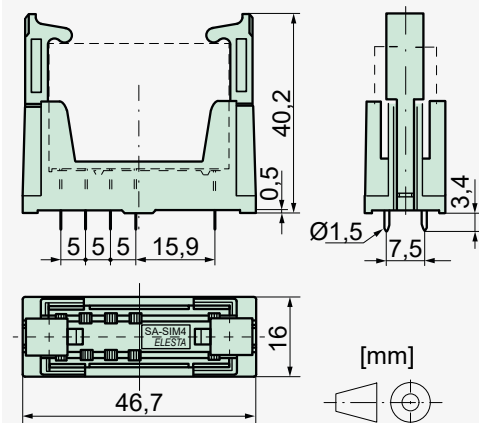
### Print socket SRP-SIM4

#### Socket data

- With plastic retaining bracket
- Socket with print connections



#### Dimensions



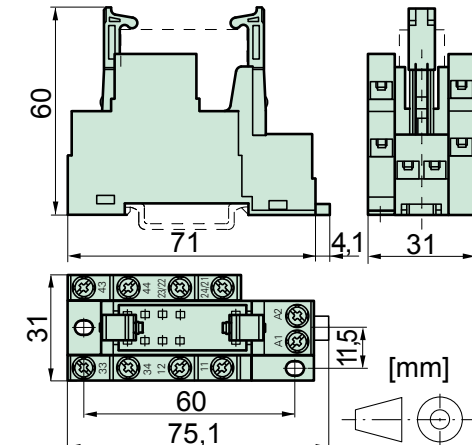
### DIN rail socket SRD-SIM4

#### Socket data

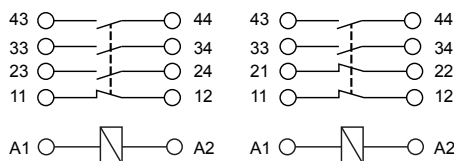
- With plastic retaining bracket
- Plug-in socket with screw terminals
- Assembly on DIN rail 35 mm or single-hole mounting with two M3 screws



#### Dimensions



#### SRD-SIM4 (SIM312...) SRD-SIM4 (SIM222...)



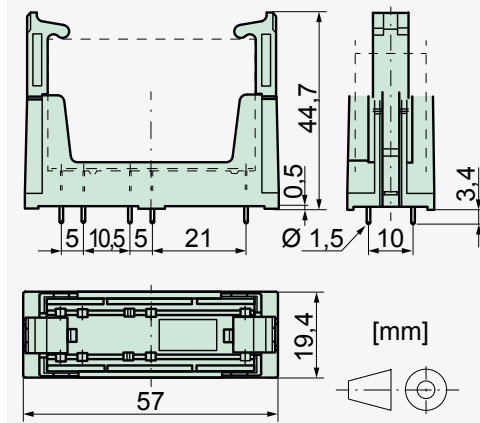
### Print socket SRP-SIR4

#### Socket data

- PCB socket for SIR4 contacts
- With plastic retaining bracket
- Socket with print connections



#### Dimensions



#### Technical data

Rated current	8A
Rated voltage	250 VAC
Test voltage coil/contacts	4 000 Vrms
Insulation class IEC 60664-1	250 VAC
Creepage resistance	CTI 250
Weight	approx. 11 g
Ambient temperature	-25°C to +70°C
Packing unit	10 pcs
Approvals	UL, cUL
UL File	E301947

#### Technical data

Rated current	8A
Rated voltage	250 VAC
Test voltage coil/contacts	3 000 Vrms
Insulation class IEC 60664-1	250 VAC
Creepage resistance	CTI 250
Weight	approx. 65 g
Ambient temperature	-25°C to +70°C
Connection cross-sections	
for wires	2 x 2,5 mm <sup>2</sup>
for wire end ferrules	2 x 1,5 mm <sup>2</sup>
Maximum torque	0,8 Nm
Packing unit	10 pcs
Approvals	UL, cUL
UL File	E238167

#### Technical data

Rated current	8A
Rated voltage	250 VAC
Test voltage coil/contacts	4 000 Vrms
Insulation class IEC 60664-1	250 VAC
Creepage resistance	CTI 250
Weight	approx. 15 g
Ambient temperature	-25°C to +70°C
Packing unit	10 pcs
Approvals	UL, cUL
UL File	E301947